

1 TP 40-270/2 A-F-A-BUBE

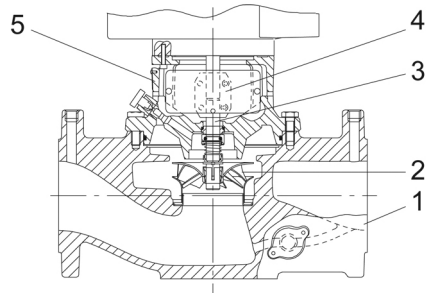


12756. Pipework connection is via PN 16 DIN flanges (EN 1092-2 and ISO 7005-2).  
 PN 16 DIN (EN 1092-2 ISO 7005-2).

EN

1 2013 (MEI) 0,70 ( )

- 1) ;
- 2) ;
- 3) ( ) ;
- 4) 200-250°C.



- 1:
- 2:
- 3:
- 4:
- 5:

/PTFE

(WC)

EPDM

: EPDM ( )  
. EPDM

IEC DIN.

IEC 60034.

(FT).

3611 (Code II).

IEC 60034-7: IM B 14, IM V 18 (Code I) / IM 3601, IM

IE3

IEC 60034-30-1.

. Grundfos CUE

Grundfos Product Center.

: 0 .. 140 °C  
: 20 °C  
: 998.2 / <sup>3</sup>

: 2880 /

: 12.5 <sup>3</sup>/<sub>l</sub>  
: 19.9  
: 145

: BUBE  
- : ISO9906:2012 3B

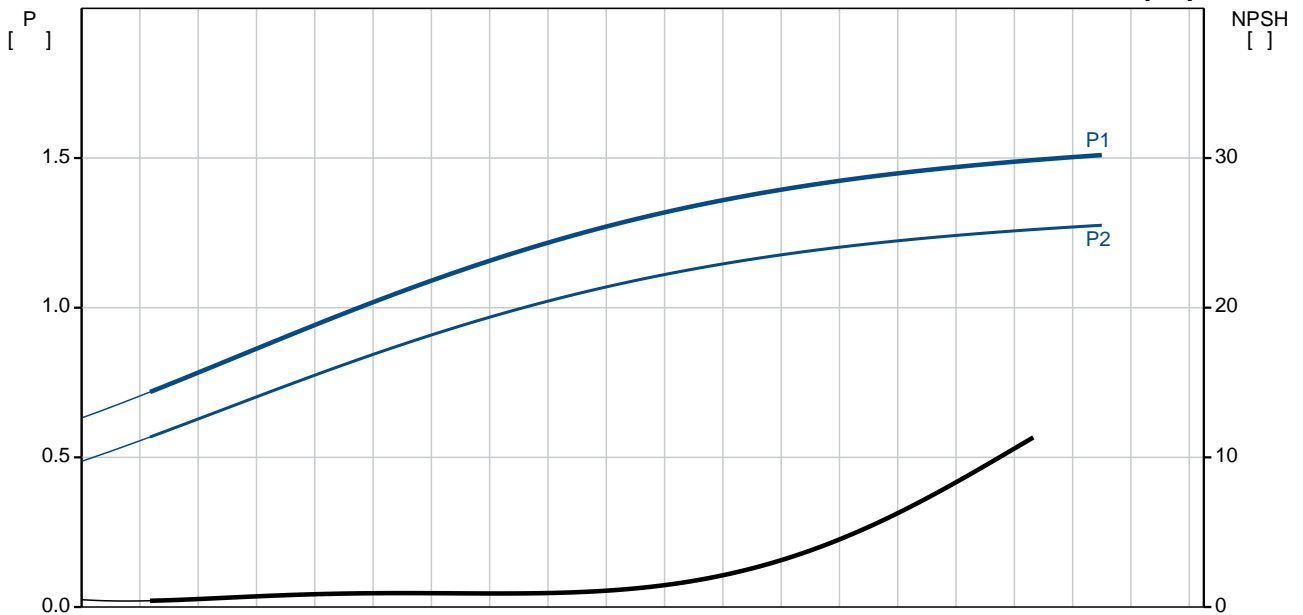
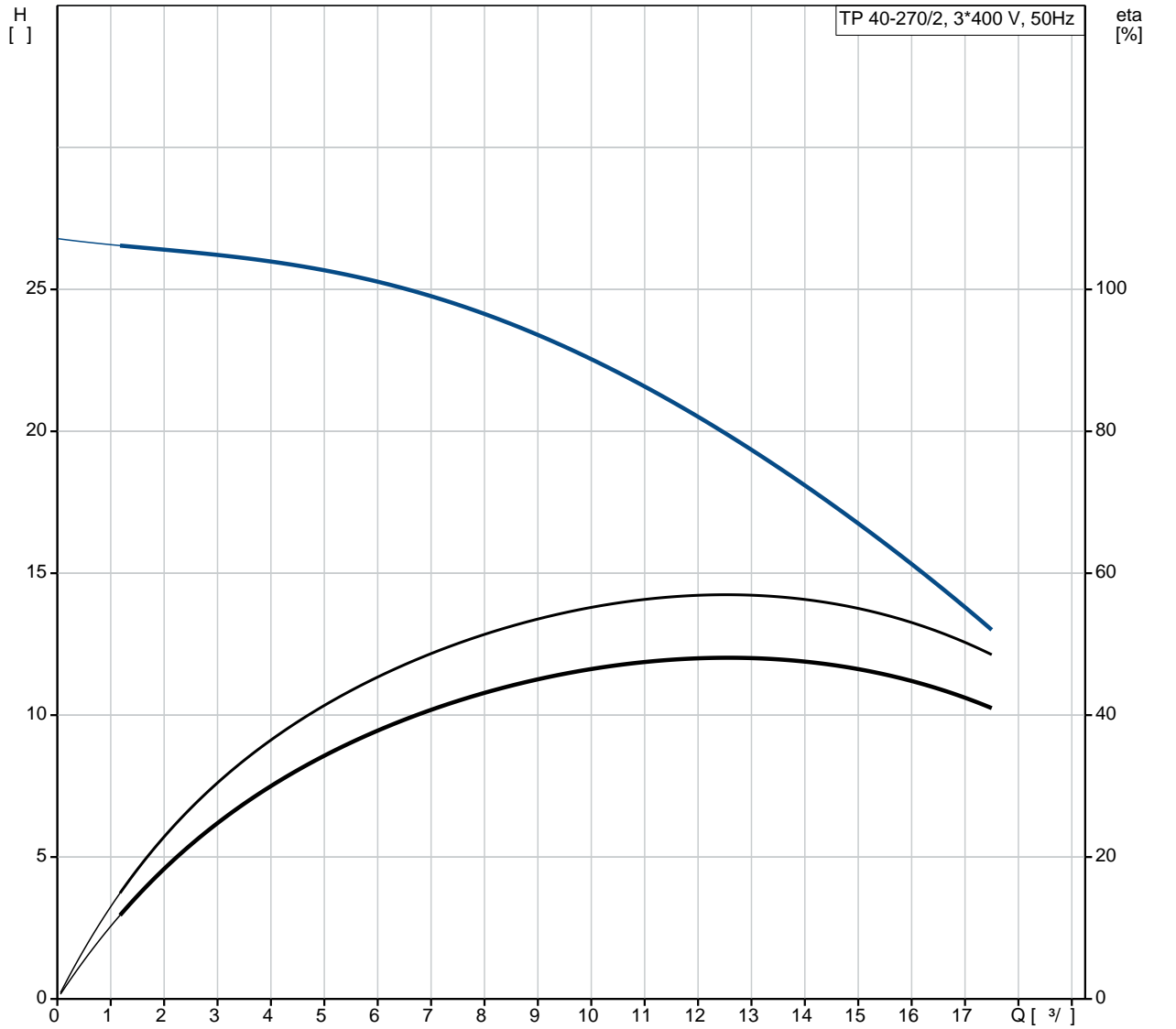
EN-JL1040  
ASTM A48-40 B

DIN W.-Nr. 1.4301  
AISI 304

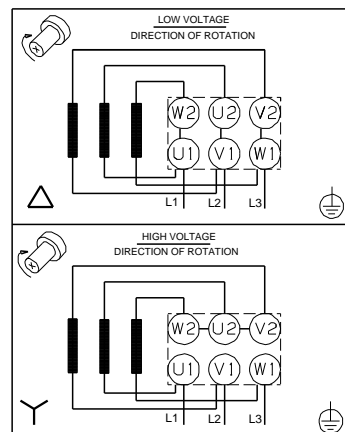
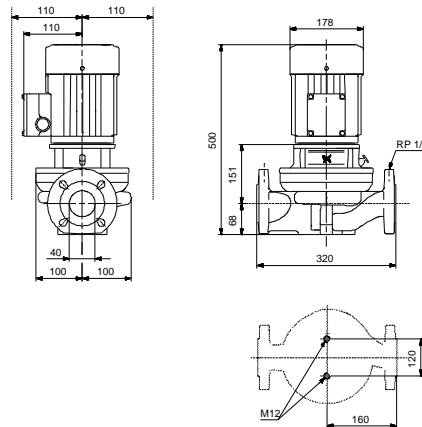
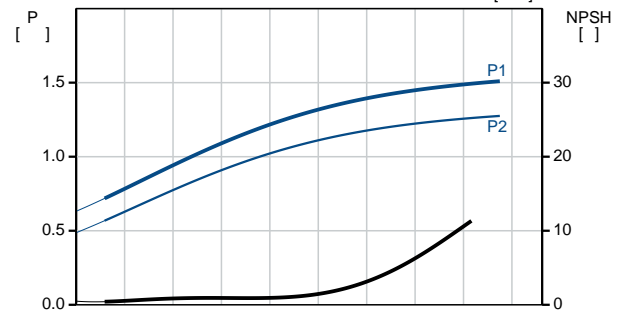
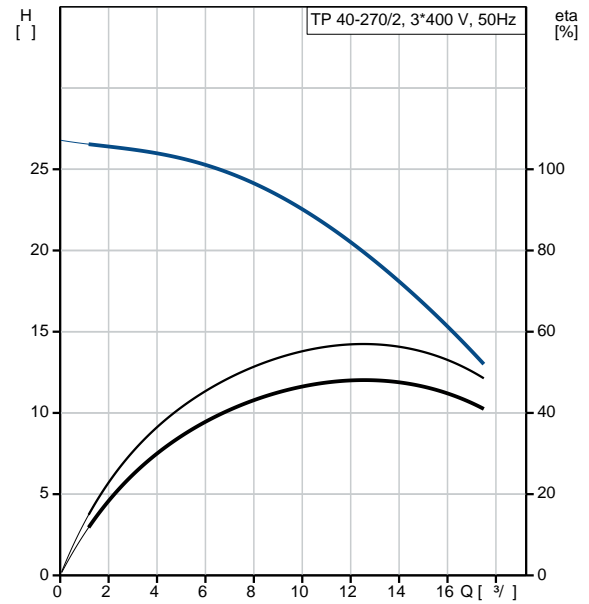
: -30 .. 60 °C

: 16  
 : DIN  
 : DN 40  
 : DN 40  
 : DN 40  
 : PN 16  
 : 320  
 : FT115  
  
 :  
 : 90SB  
 - : IE3  
 - P2: 1.5  
 ( 2), : 1.5  
 : 50 Hz  
 : 3 x 220-240D/380-415Y  
 : 5.45/3.15 A  
 : 850-930 %  
 Cos - : 0.87-0.82  
 : 2890-2910 /  
 : IE3 84,2%  
 : 84.2 %  
 3/4 : 84.5 %  
 1/2 : 83.1 %  
 : 2  
 (IEC 34-5): 55 Dust/Jetting  
 (IEC 85): F  
 : 85U05906  
  
 : MEI : 0.70  
 ErP : EuP /  
 : 38  
 ( ): 45.2  
 : 0.07 <sup>3</sup>  
 Danish VVS No.: 382761270  
 C : RU  
 : 8413705100

**TP 40-270/2 A-F-A-BUBE 50**

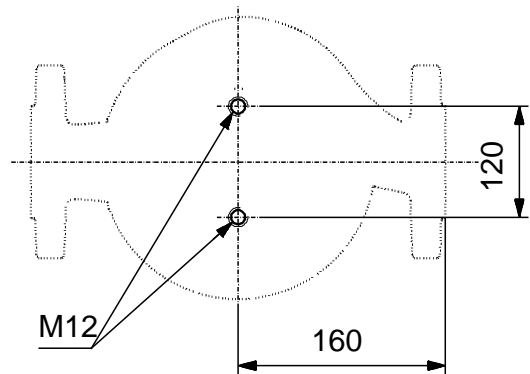
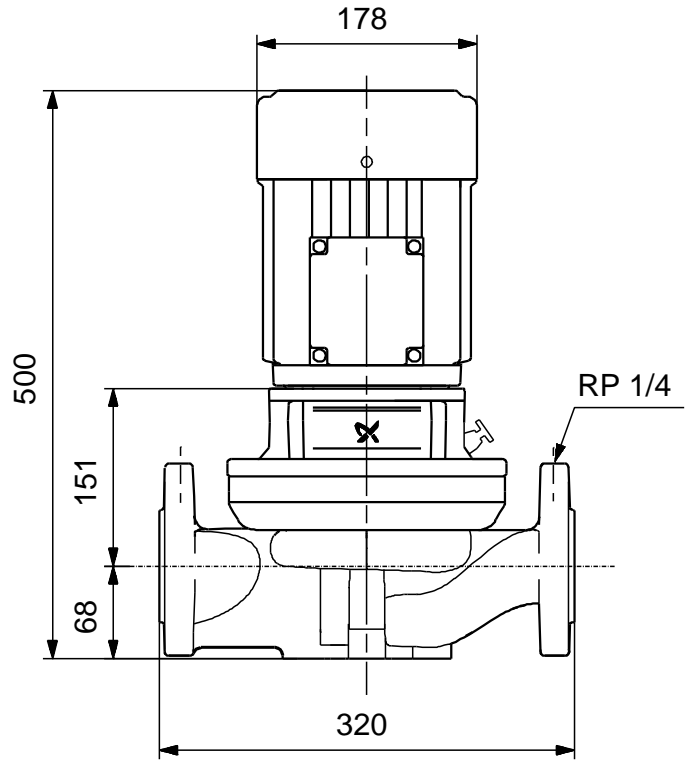
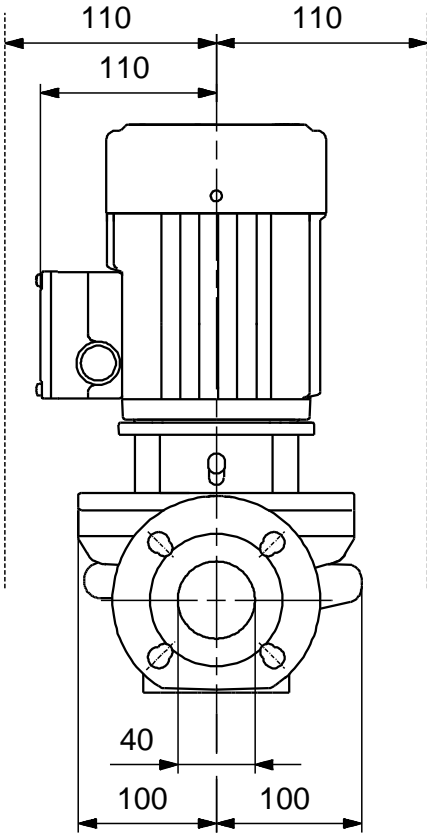


TP 40-270/2 A-F-A-BUBE
EAN
2880 /
12.5 <sup>3/</sup>
19.9
270
145
BUBE
ISO9906:2012 3B
A
A
EN-JL1040
ASTM A48-40 B
DIN W.-Nr. 1.4301
AISI 304
A
-30 .. 60 °C
16
DIN
DN 40
DN 40
DN 40
PN 16
320
FT115
F
0 .. 140 °C
20 °C
998.2 / <sup>3</sup>
90SB
IE3
- P2: 1.5
( 2), 1.5
50 Hz
3 x 220-240D/380-415Y
5.45/3.15 A
850-930 %
Cos - 0.87-0.82
2890-2910 /
IE3 84,2%
84.2 %

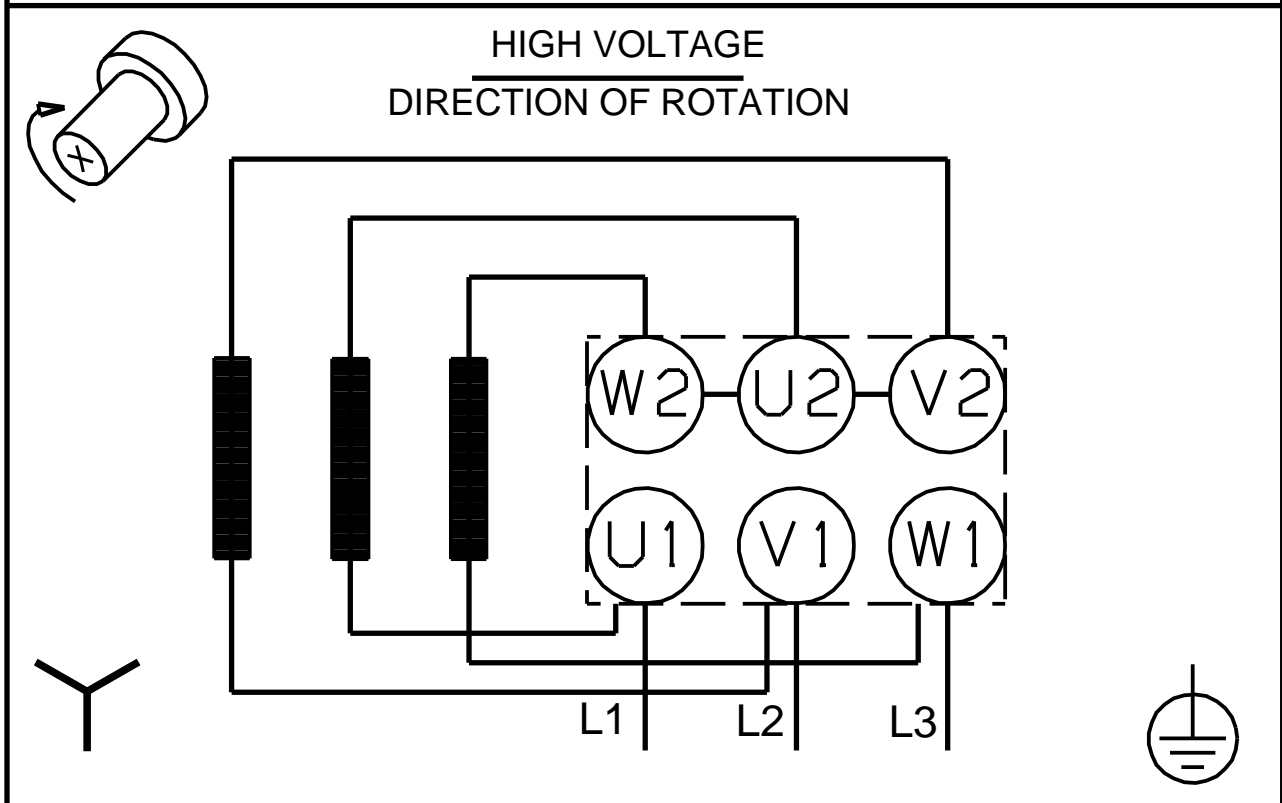
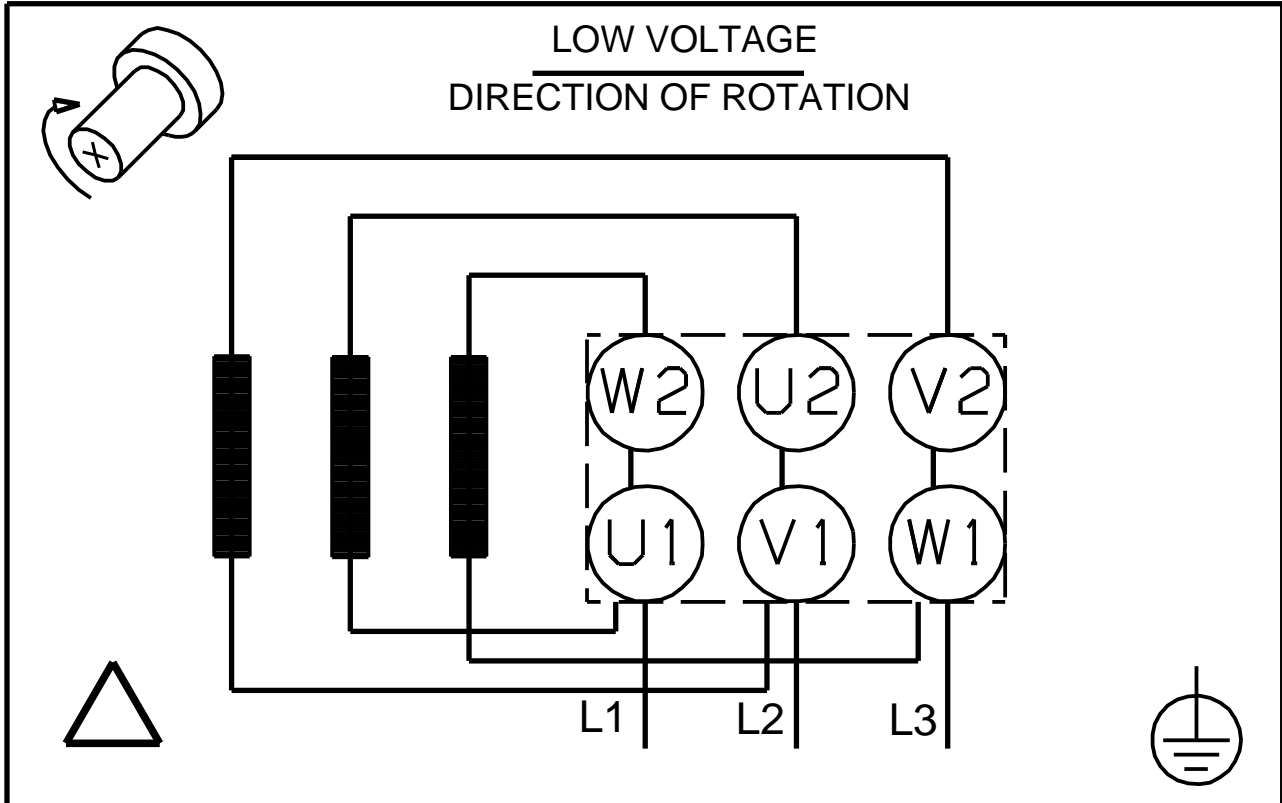


	3/4	84.5 %
1/2		83.1 %
		2
	(IEC 34-5):	55 Dust/Jetting
	(IEC 85):	F
		85U05906
	MEI :	0.70
ErP		EuP
		38
( ):		45.2
		0.07 <sup>3</sup>
Danish VVS No.:		382761270
C		RU
		8413705100

**TP 40-270/2 A-F-A-BUBE 50**



**TP 40-270/2 A-F-A-BUBE 50**



! [ ], .