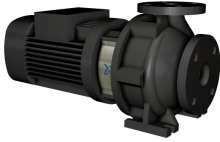


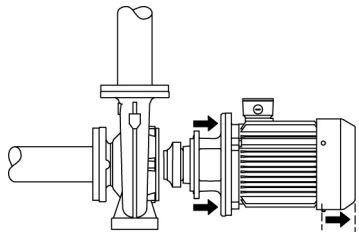
1 NB 32-125.1/121 A-F2-A-E-BAQE



: 97839211

733 (10) . - PN 16 ISO 5199, EN 1092-2. EN
 DIN EN 12756.

1 2013 . (MEI) 0,70. ()



- 1)
 - 2)
 - 3)
 - 4)
- 18-22
 NCS 9000/RAL 9005.

G6.3 ISO 1940-1,

(EN-GJL-250).

°C.	120 °C.	(SiC)	90
EPDM	: EPDM ()	. EPDM	
	IEC DIN.		IEC 60034.
	IE3		IEC 60034-30-1.
			(I1/1).
		. Grundfos CUE	Grundfos Product Center.
	: 0 .. 120 °C		
	: 20 °C		
	998.2 / ³		
		: 2890 /	
	: 19.6 ³/		
	: 15.6		
	: 121		
	: 125.1		
	: BAQE		
	: NONE		
	: ISO9906:2012 3B		
	EN-GJL-250		
	ASTM A48-40 B		
	EN-GJL-200		
	ASTM A48-30 B		
	Stainless steel		
	1.4301		
	304		
	EPDM		
		(CuZn34Mn3Al2)	

: 60 °C

: 16
 : EN 1092-2
 : DN 50
 : DN 32
 : PN 16

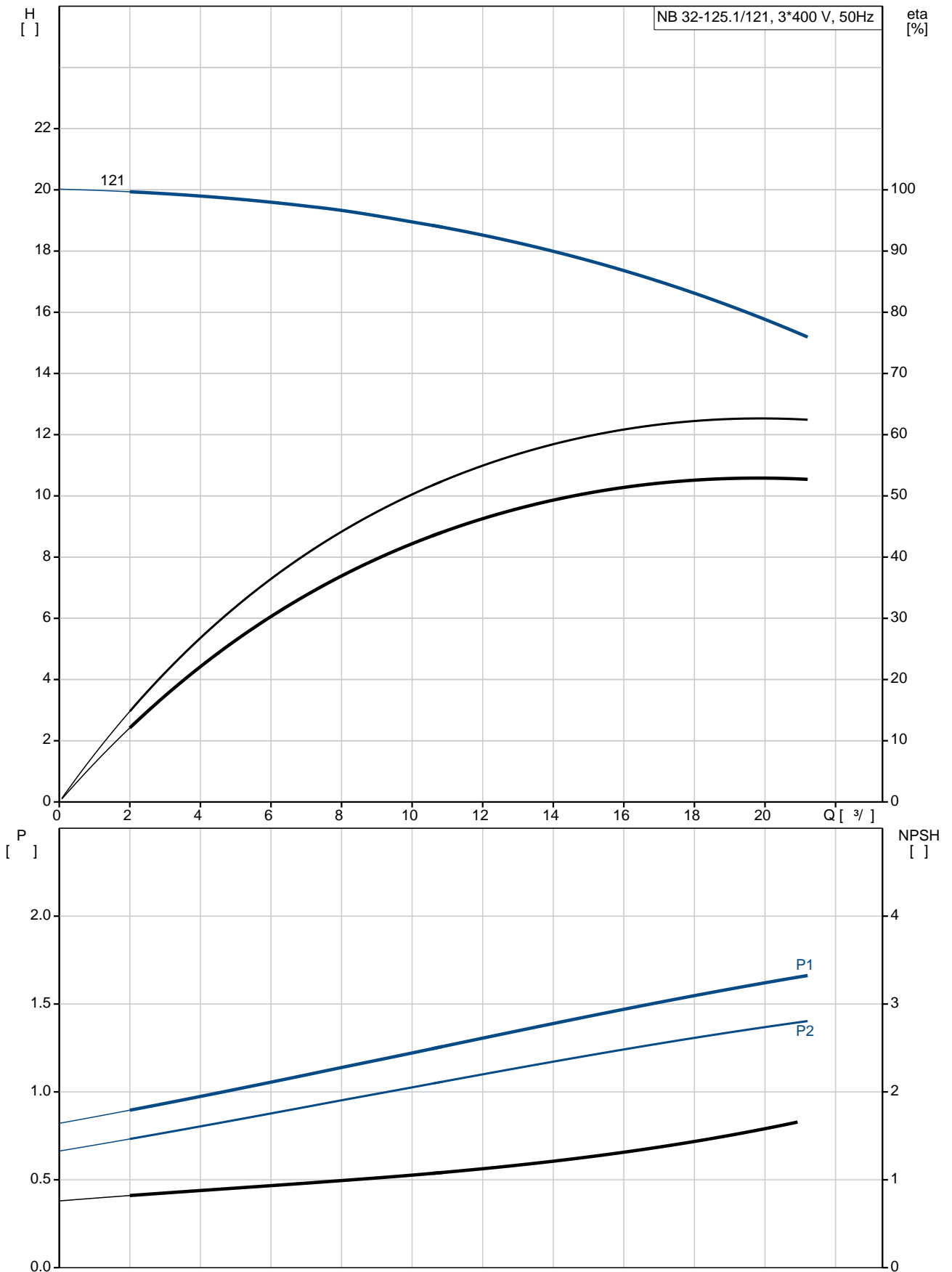
 :
 : 90SB
 - : IE3
 - P2: 1.5
 : 50 Hz
 : 3 x 220-240D/380-415Y
 : 5.45/3.15 A
 : 850-930 %
 Cos - : 0.87-0.82
 : 2890-2910 /
 : IE3 84,2%

 : 84.2 %
 3/4 : 84.5 %
 1/2 : 83.1 %

 : 2
 (IEC 34-5): 55 Dust/Jetting
 (IEC 85): F
 : Grease

 :
 MEI : 0.70
 ErP : EuP /
 : 42
 : 52
 : 0.178 ³
 C : RU
 : 8413705100

97839211 NB 32-125.1/121 A-F2-A-E-BAQE 50



NB 32-125.1/121
 A-F2-A-E-BAQE
 EAN : 5710625513728
 97839211

: 2890 /

: 19.6 ³/_l
 : 15.6

: 121

: 125.1

: BAQE

: 24

: NONE

- : ISO9906:2012 3B

: A

EN-GJL-250

ASTM A48-40 B

EN-GJL-200

ASTM A48-30 B

Stainless steel

1.4301

304

: A

: EPDM

: E

(CuZn34Mn3Al2

: 60 °C

: 16

: EN 1092-2

: DN 50

: DN 32

: PN 16

():

: F2

: 0 .. 120 °C

: 20 °C

: 998.2 / ³

: 90SB

- : IE3

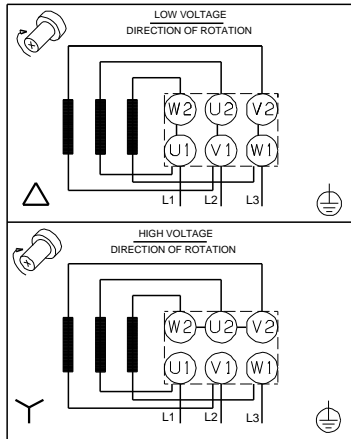
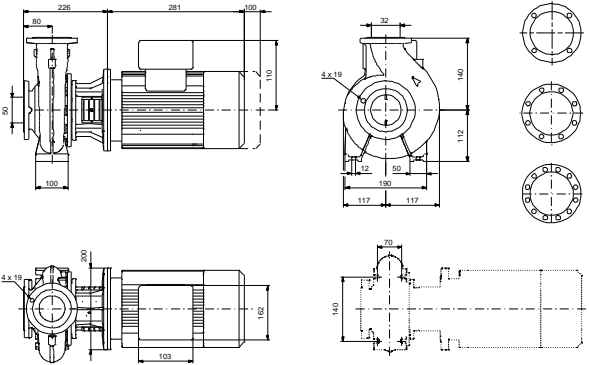
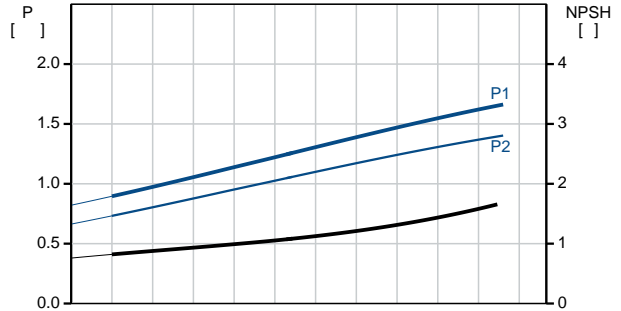
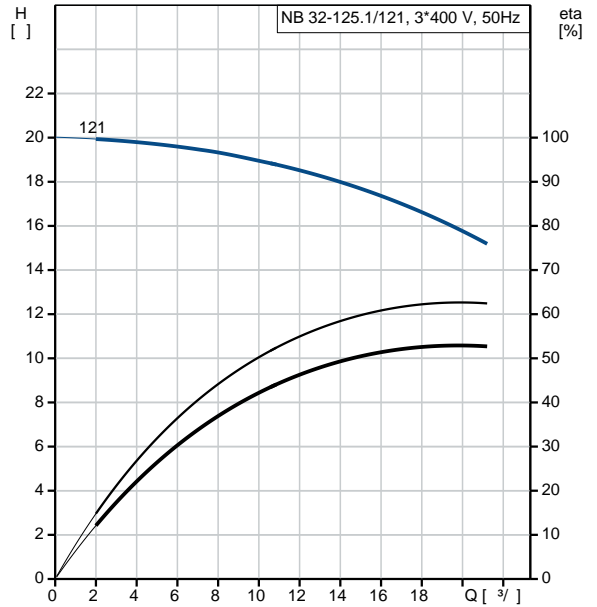
- P2: 1.5

: 50 Hz

: 3 x 220-240D/380-415Y

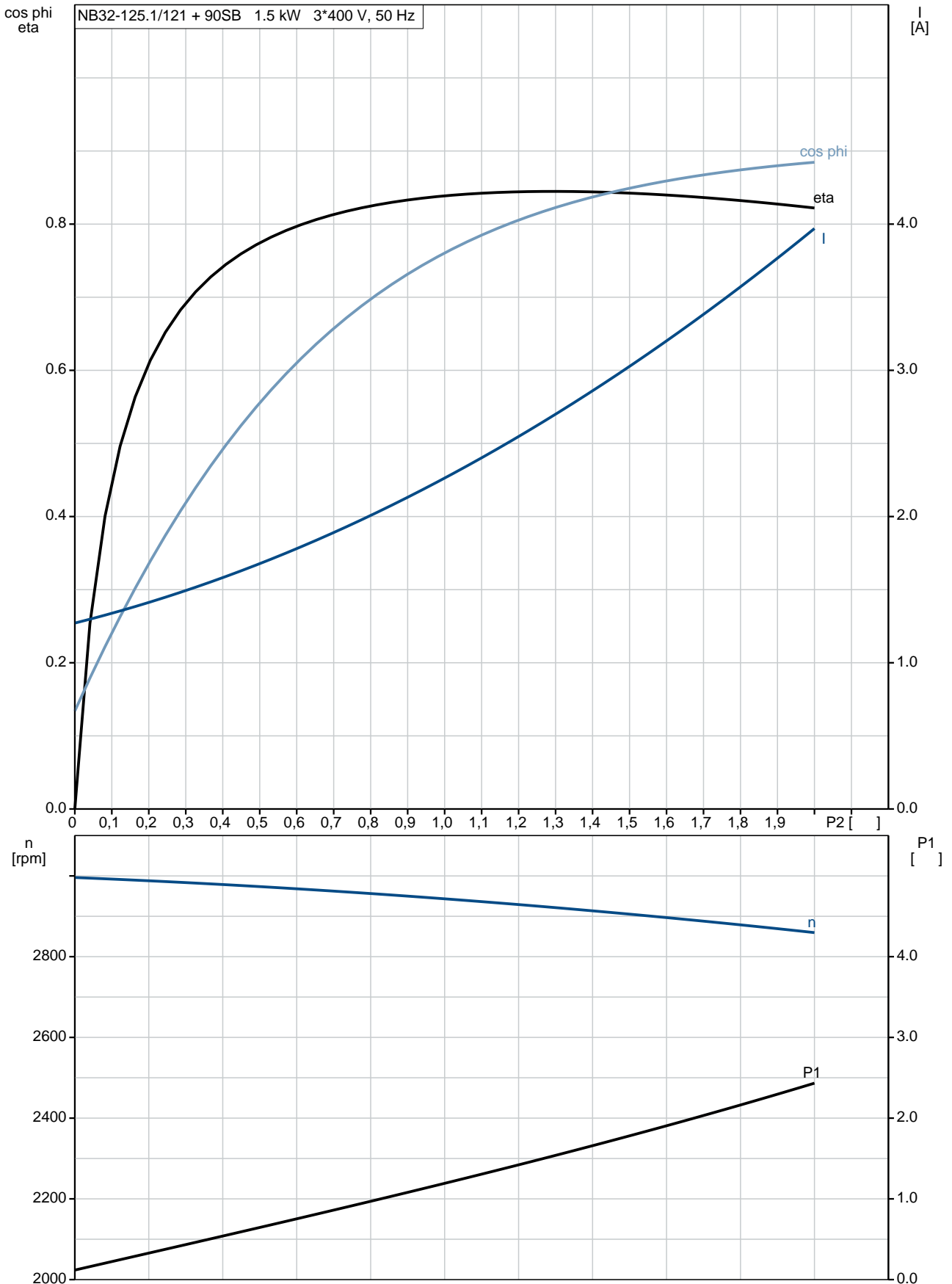
: 5.45/3.15 A

: 850-930 %

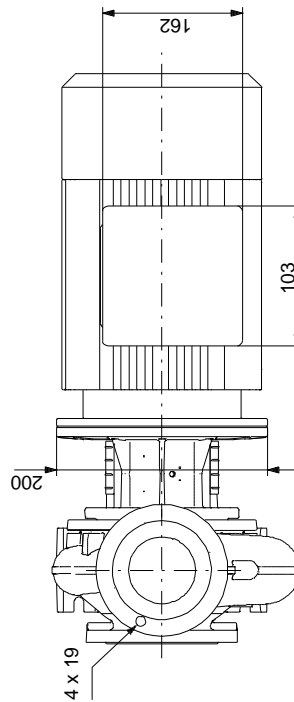
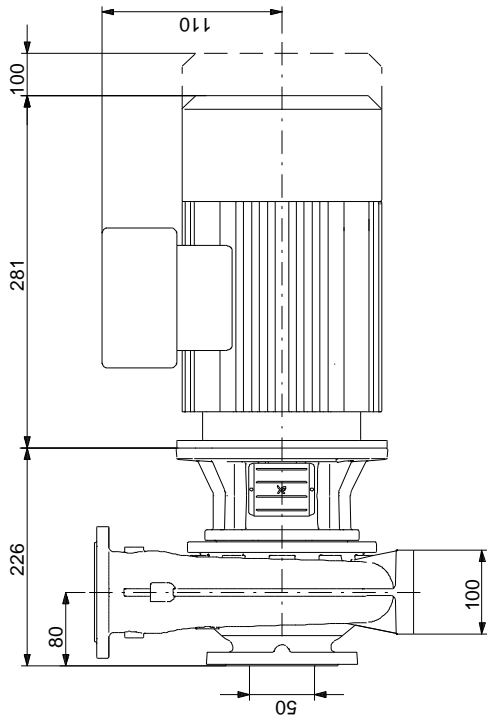
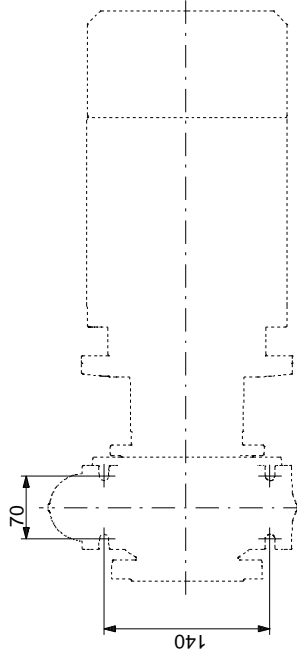
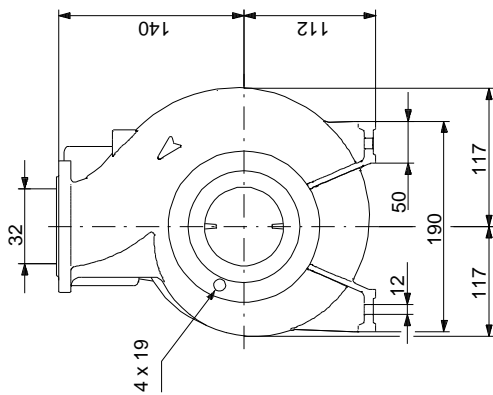
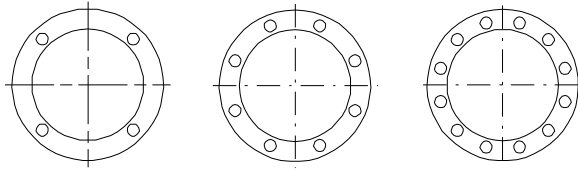


Cos	-	0.87-0.82
	:	
	:	2890-2910 /
	:	IE3 84,2%
	:	84.2 %
3/4	:	84.5 %
	:	1/2 83.1 %
	:	2
	:	(IEC 34-5): 55 Dust/Jetting
	:	(IEC 85): F
	:	87220289
34-7:	:	IEC IM V1/B5
	:	Grease
	:	MEI : 0.70
ErP	:	EuP /
	:	42
	:	52
	:	0.178 ³
C	:	RU
	:	8413705100

97839211 NB 32-125.1/121 A-F2-A-E-BAQE 50

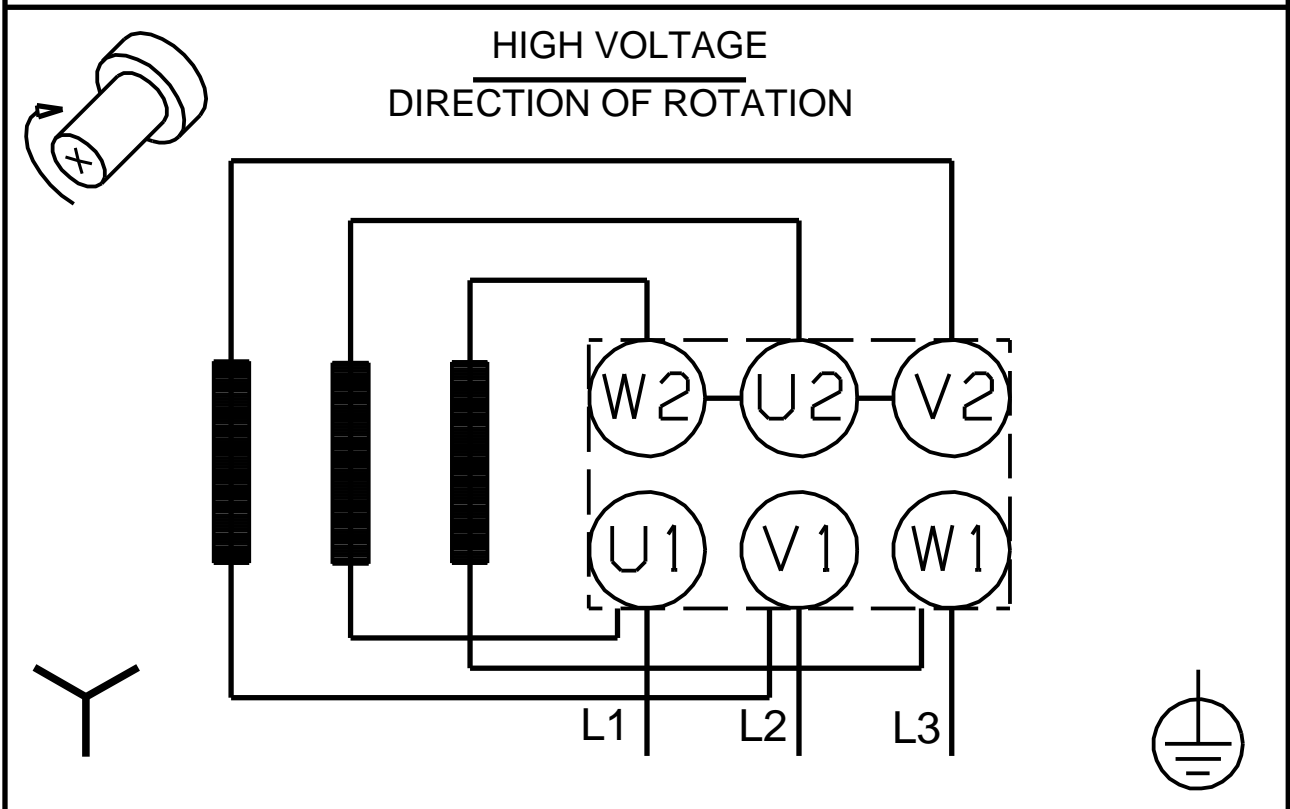
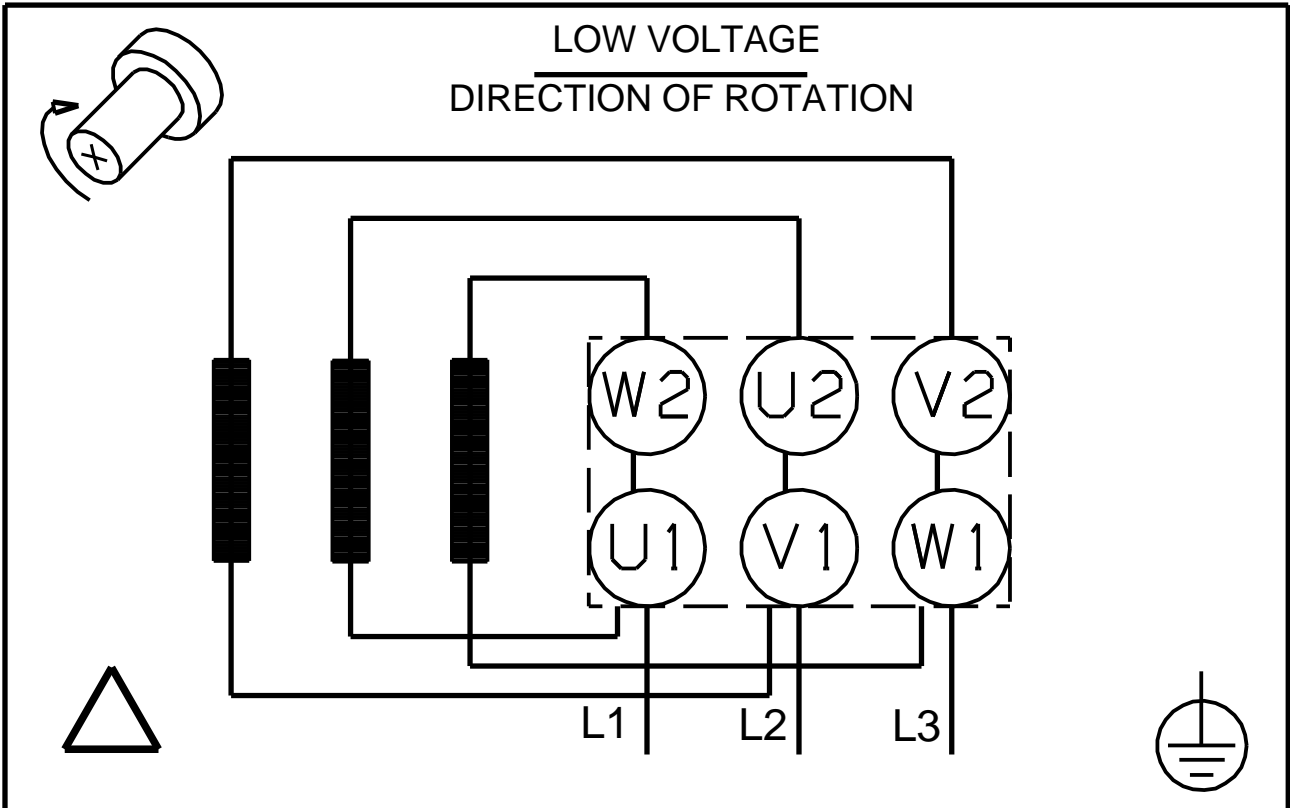


97839211 NB 32-125.1/121 A-F2-A-E-BAQE 50



! []

97839211 NB 32-125.1/121 A-F2-A-E-BAQE 50



! [], .