

1 UPSD 32-80 180



, PES/PP.

1-

: -25 .. 110 °C
 : 60 °C
 : 983.2 / 3

TF : 110
 : EAC

EN-JL1030
 ASTM 30 B
 , PES/PP

.T : - 80 0C: 40 °C

: 10
 : G 2
 : PN 10
 : 180

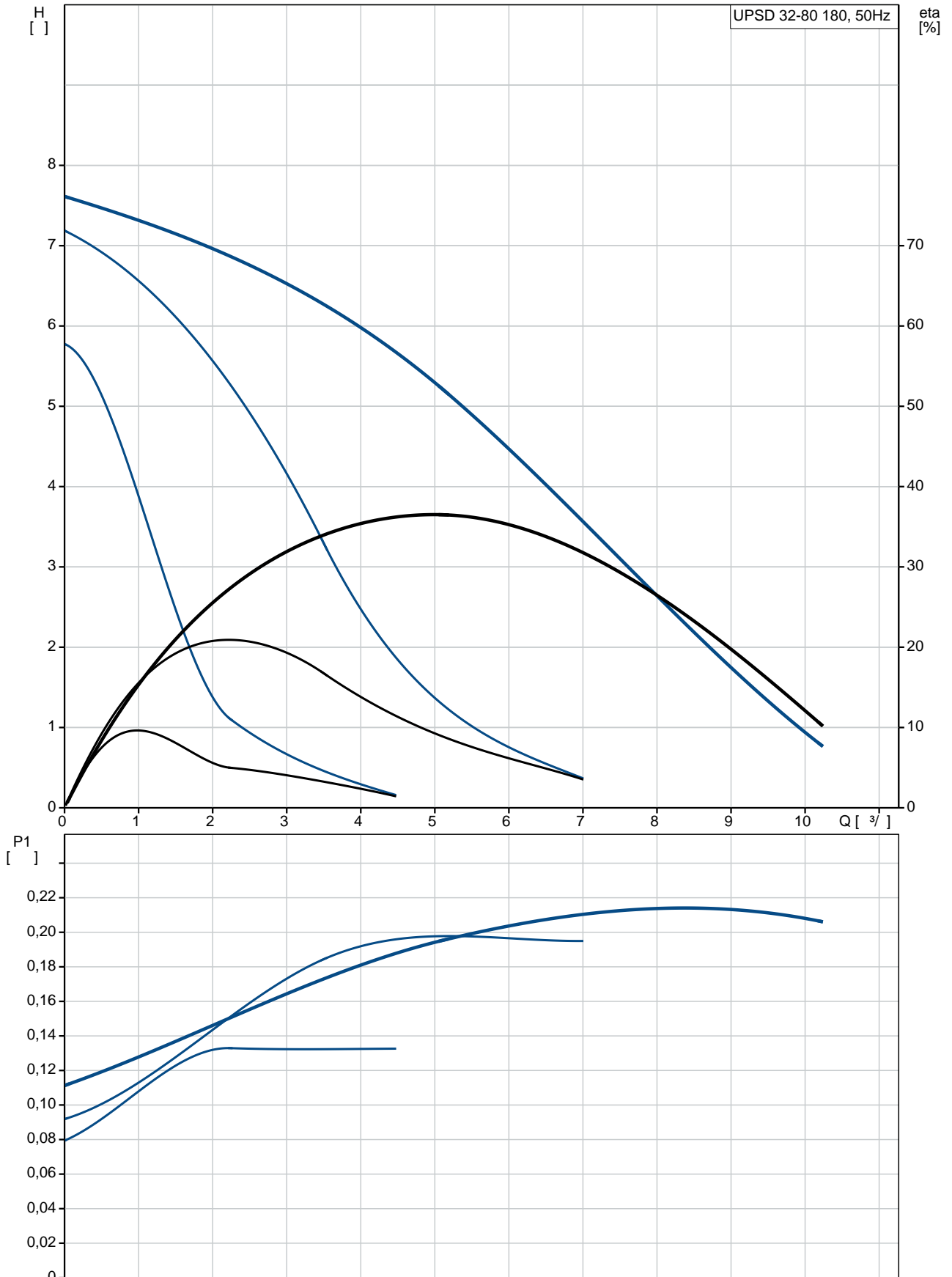
:
 1: 135
 2: 200

: 220
 : 50 Hz
 : 1 x 230

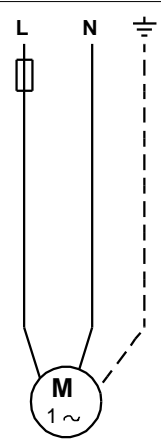
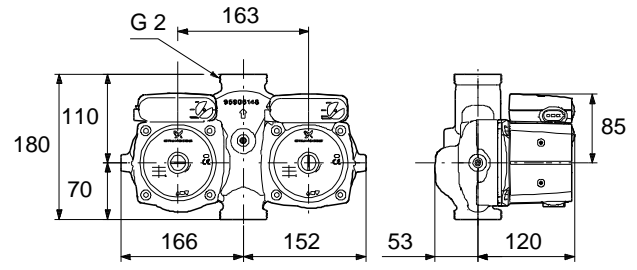
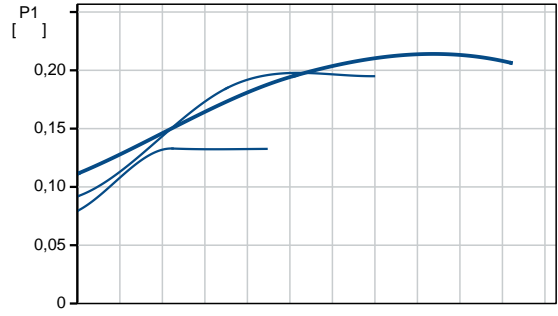
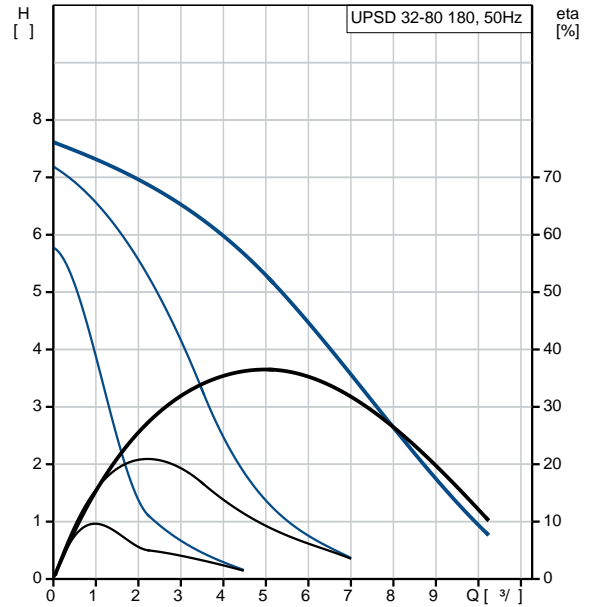
1: 0.6 A
2: 0.9 A
3: 0.98 A
- : 4
(IEC 34-5): X2D
(IEC 85): F

:
:
:
:
:
C : : 10.8
: : 11.3
: : 0.015³
: : RS
: : 8413703000

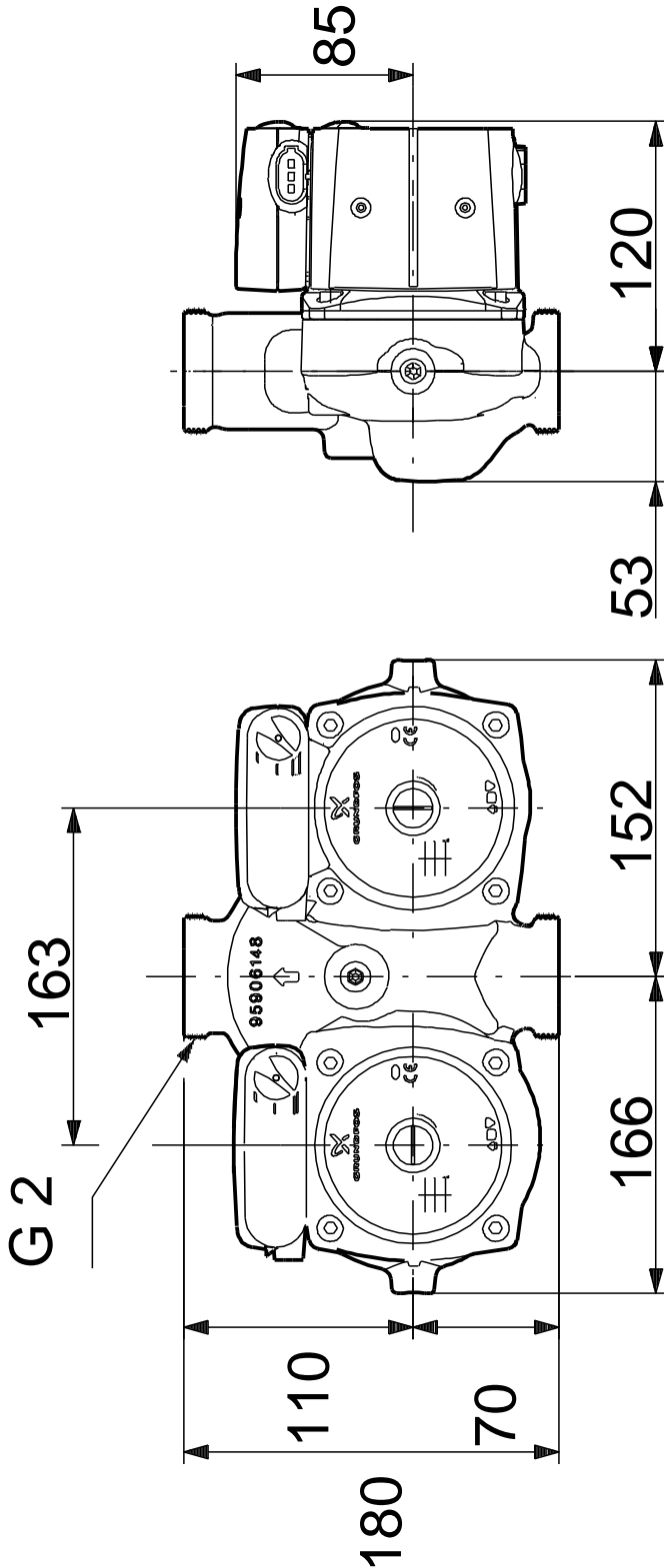
UPSD 32-80 180 50



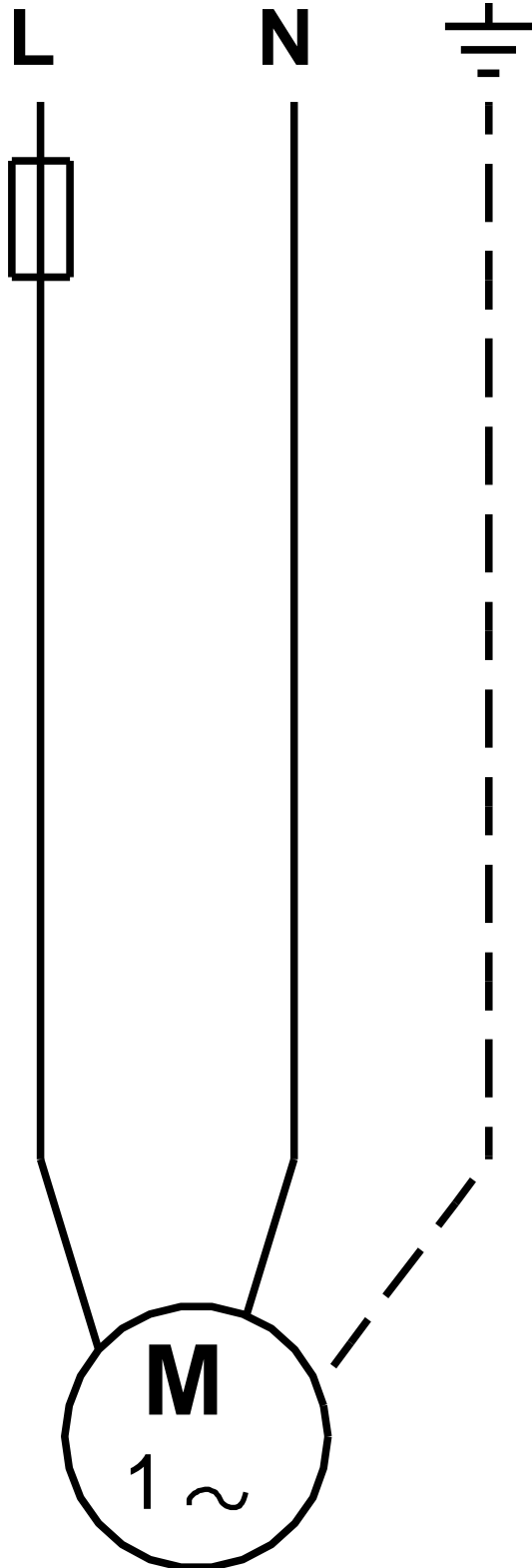
UPSD 32-80 180	
EAN	
TF	3
	80
	110
	EAC
	EN-JL1030
	ASTM 30 B
	, PES/PP
80 OC:	40 °C
	10
	G 2
	PN 10
	180
	-25 .. 110 °C
	60 °C
	983.2 / ³
	1: 135
	2: 200
	220
	50 Hz
	1 x 230
	1: 0.6 A
	2: 0.9 A
	3: 0.98 A
	4
(IEC 34-5):	X2D
(IEC 85):	F
	CONTACT
	12H
	10.8
	11.3
	0.015 ³
C	RS
	8413703000



UPSD 32-80 180 50



UPSD 32-80 180 50



! [], .