

1 UPS 25-60 180



: 59546800

, PES/PP.

3-

: 2 .. 110 °C  
: 60 °C  
983.2 / 3

TF : 110  
: EAC

EN-JL1030  
ASTM 30 B  
, PES/PP

.T : - 80 0C: 80 °C

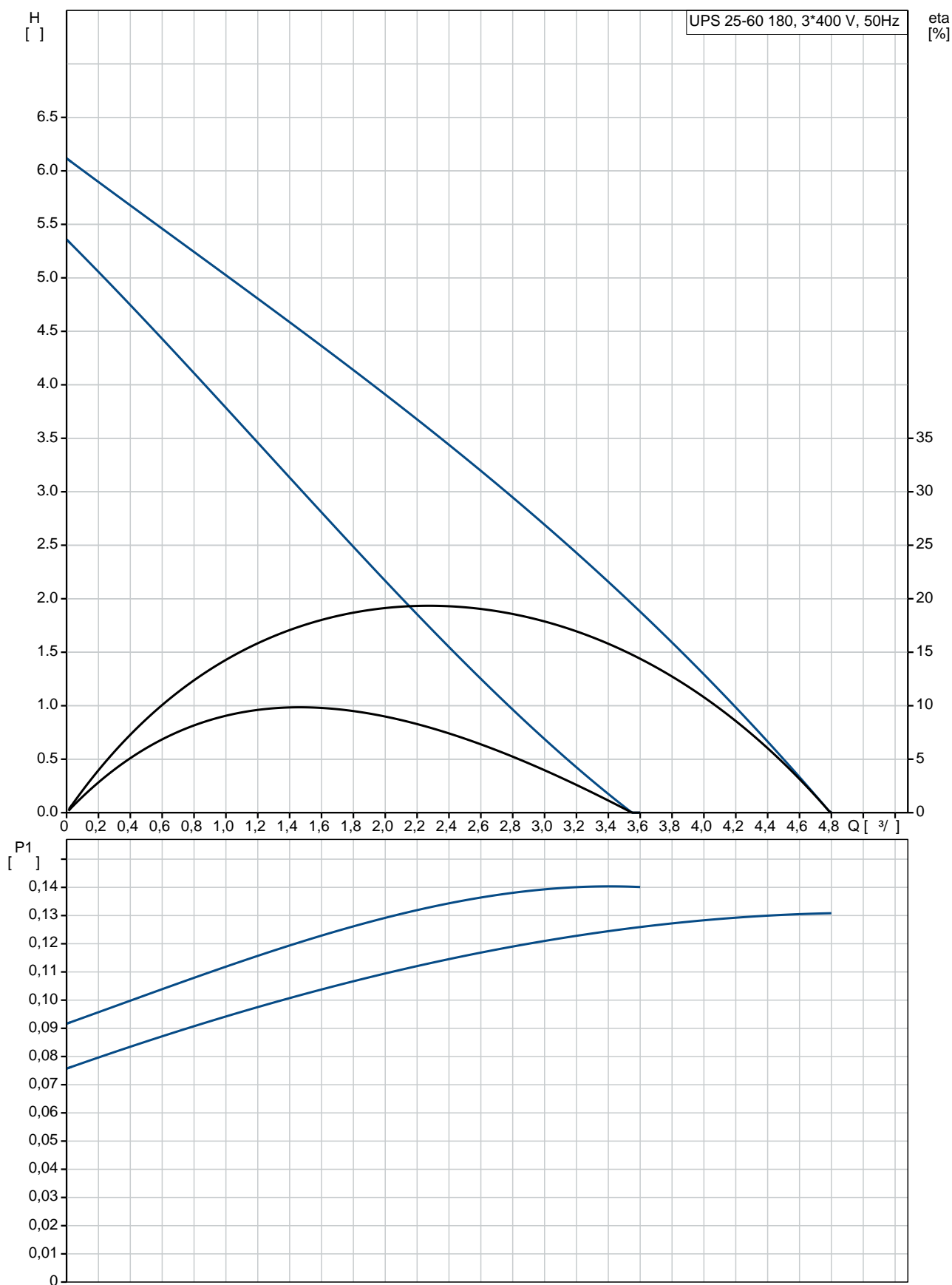
: 10  
: G 1 1/2  
: PN 10  
: 180

2: 140

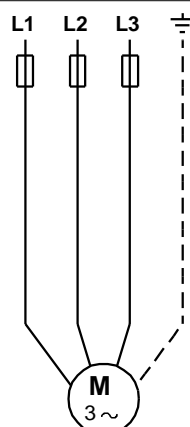
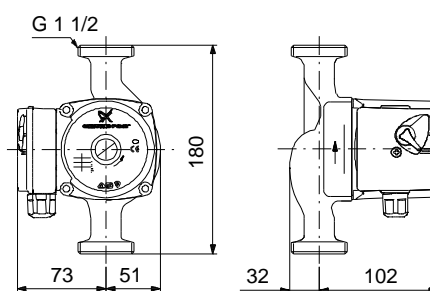
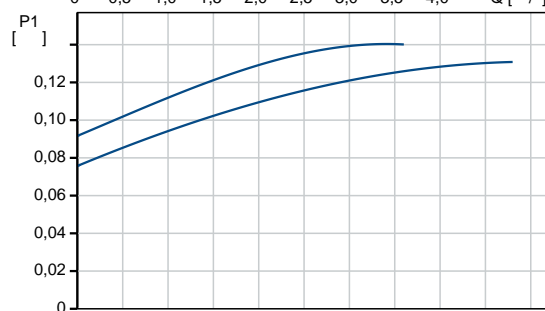
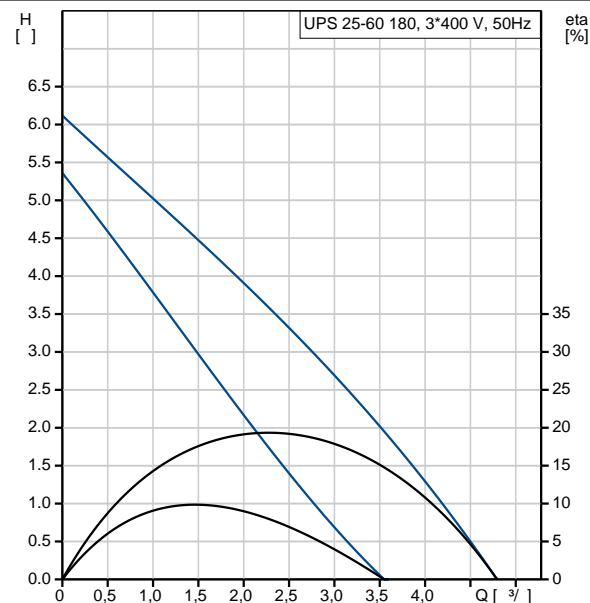
: 130  
: 50 Hz  
: 3 x 400  
2: 0.24 A  
3: 0.21 A

2: 0.3 A  
:  
0.31 A  
(IEC 34-5): IP42  
(IEC 85): H  
:  
:  
2.5  
( ): 2.7  
:  
0.004 <sup>3</sup>  
C : RS  
:  
8413703000

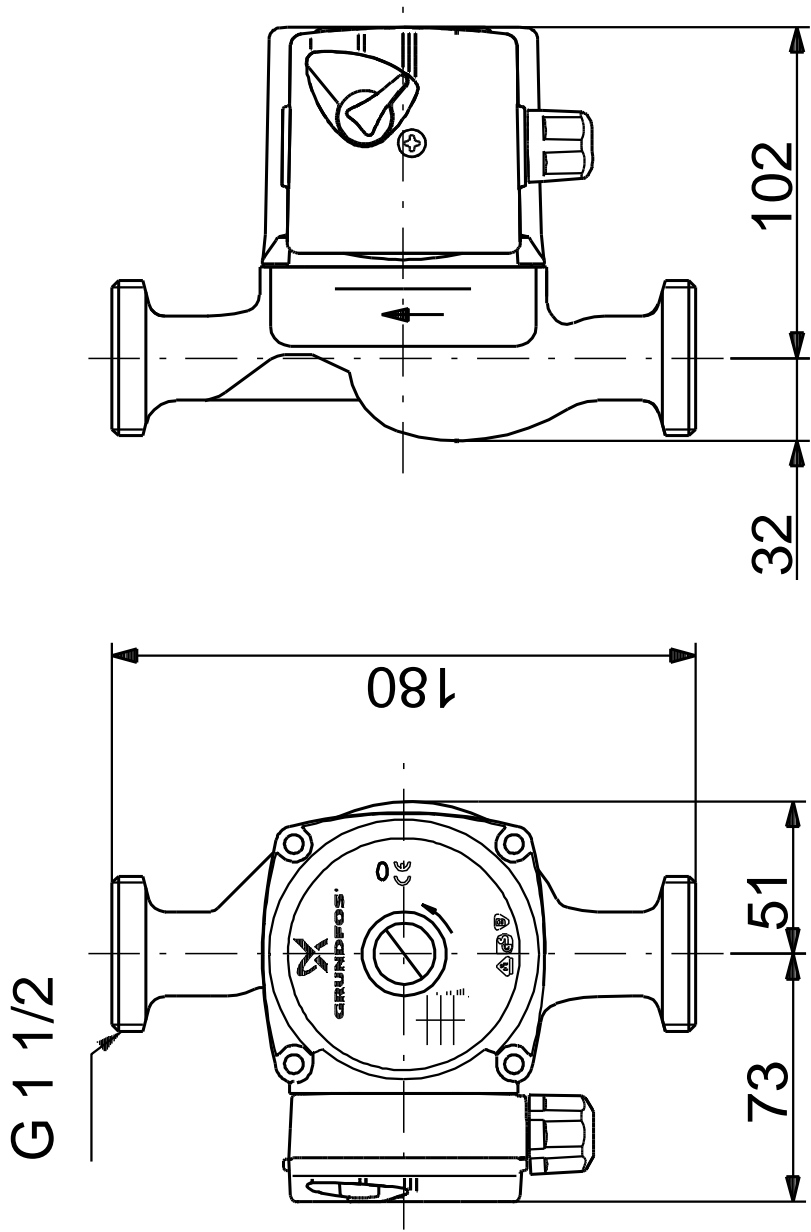
## 59546800 UPS 25-60 180 50



		UPS 25-60 180
		59546800
EAN		5700390573621
		5700390573621
		2
		60
TF		110
		EAC
		EN-JL1030
		ASTM 30 B
		, PES/PP
80 OC:		80 °C
		10
		G 1 1/2
		PN 10
		180
		2 .. 110 °C
		60 °C
		983.2 / 3
2:		140
		130
		50 Hz
		3 x 400
	2:	0.24 A
	3:	0.21 A
	2:	0.3 A
		0.31 A
	(IEC 34-5):	IP42
	(IEC 85):	H
		9H
		2.5
( ):		2.7
		0.004 3
C		RS
		8413703000



59546800 UPS 25-60 180 50



59546800 UPS 25-60 180 50

