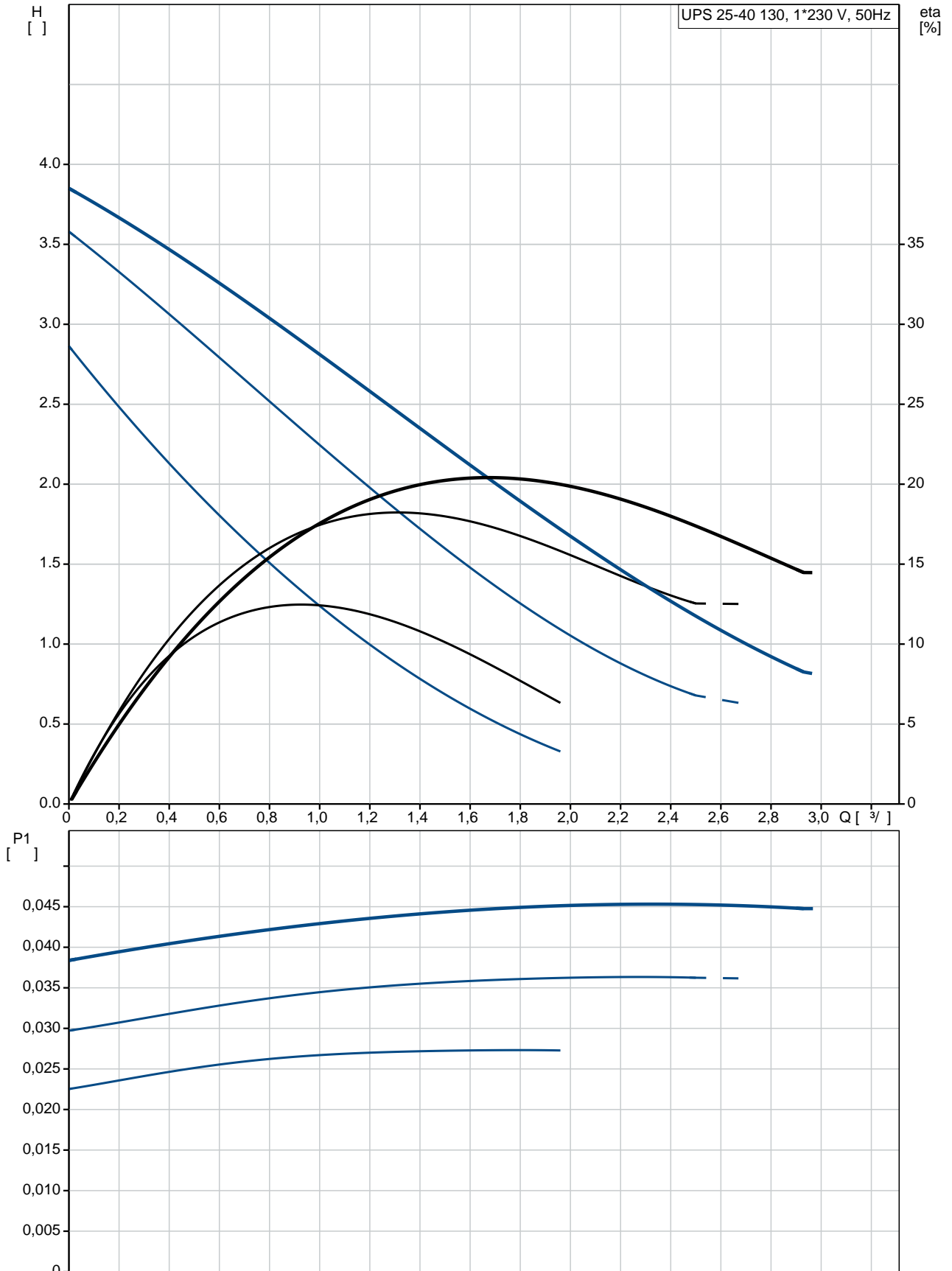


2: 0.16 A
3: 0.2 A
- : 1.5
(IEC 34-5): IP44
(IEC 85): F

C :
(): 2.4
: 2.6
: 0.004³
: RS
: 8413703000

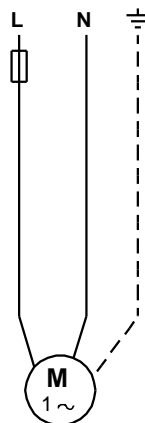
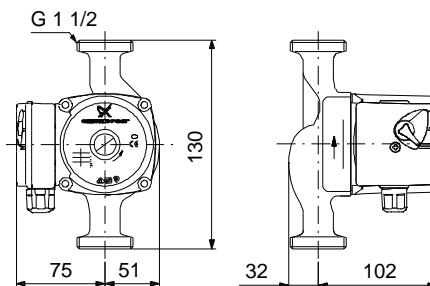
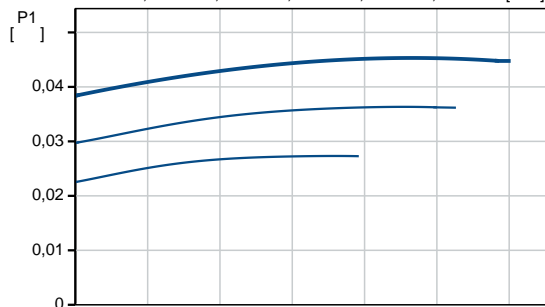
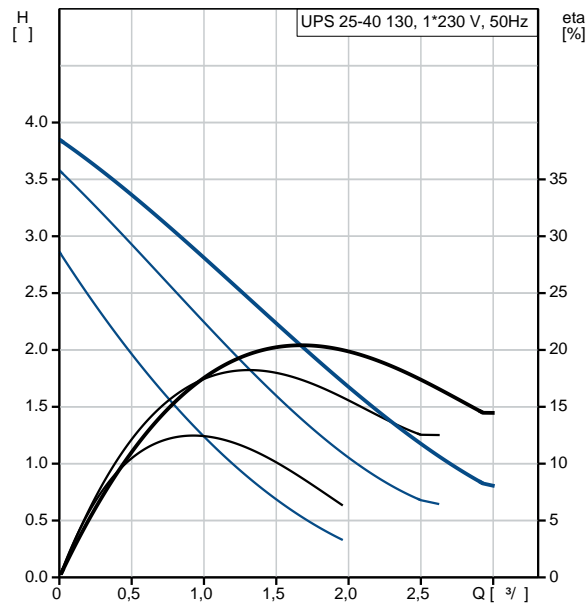
UPS 25-40 130 50



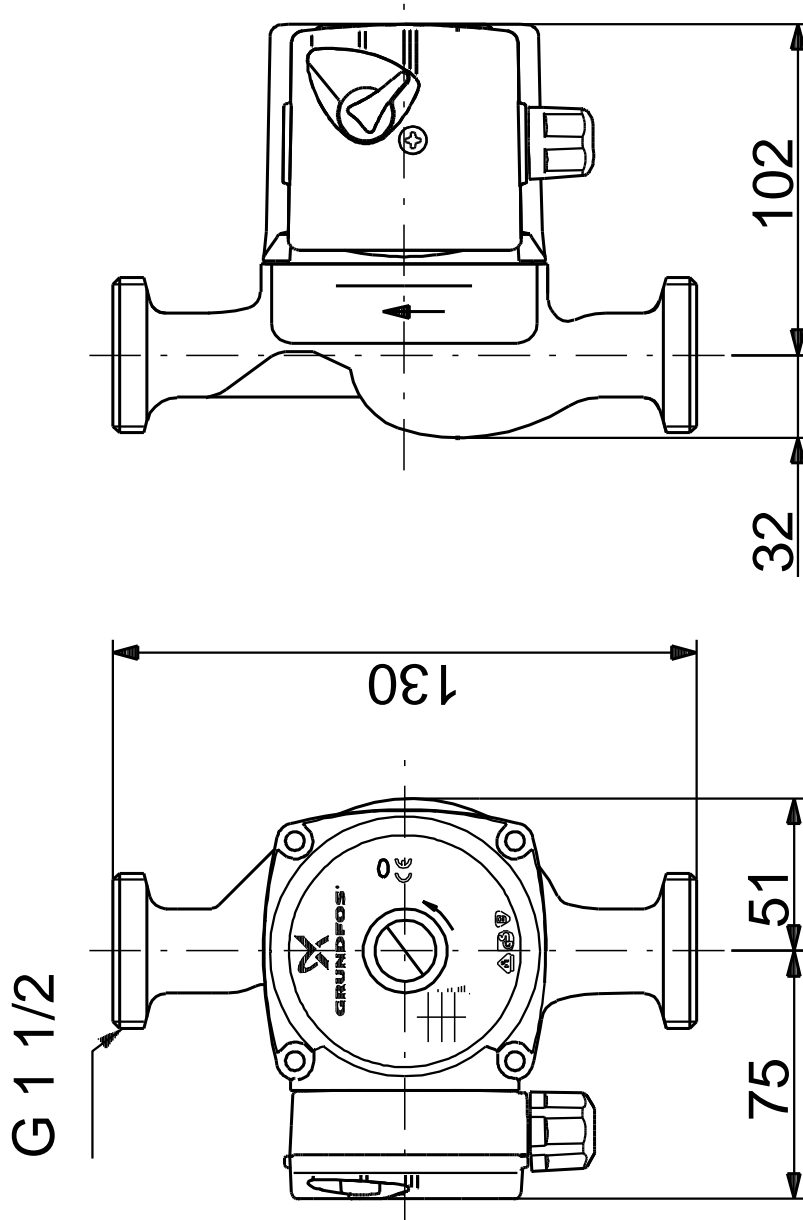
Email:

(044) 402-01-11
sales@delta-term.ua
25.09.2019

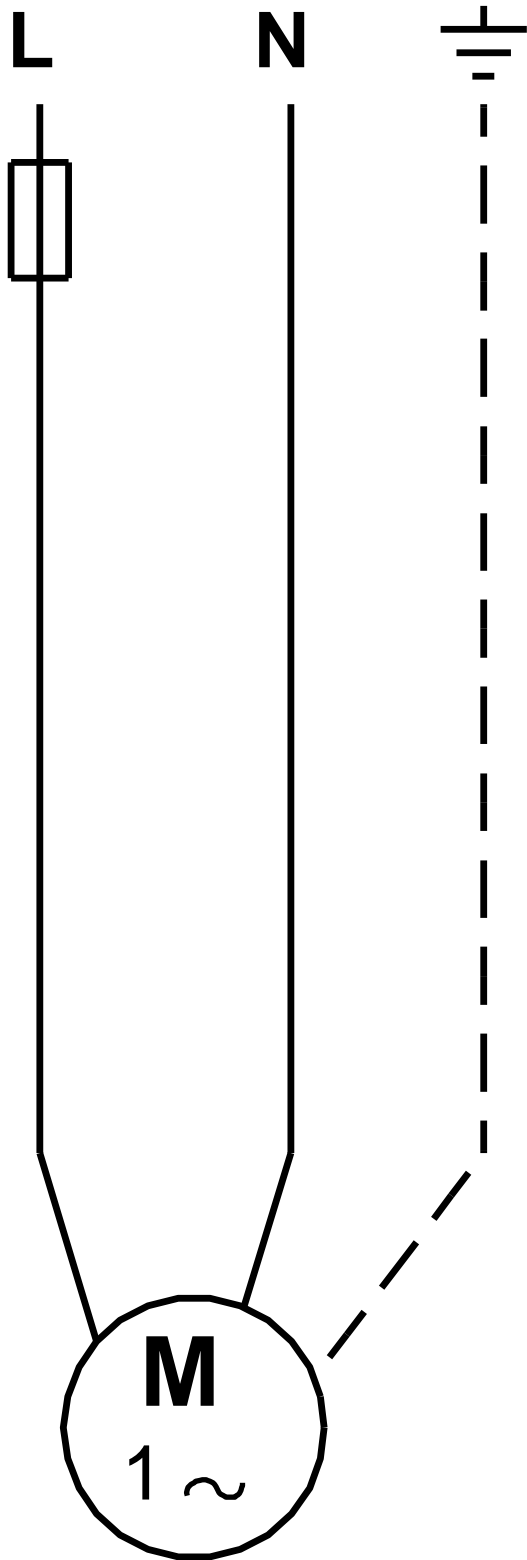
UPS 25-40 130	
EAN	
TF	3 40 110 VDE,EAC
	EN-JL1030 ASTM 30 B , PES/PP
80 OC:	40 °C
	10 G 1 1/2 PN 10 130
	2.. 110 °C 60 °C 983.2 / ³
1:	25
2:	35
	45 50 Hz 1 x 230 1: 0.12 A 2: 0.16 A 3: 0.2 A 1.5 (IEC 34-5): IP44 (IEC 85): F
	9H
	2.4 (): 2.6 0.004 ³
C	RS 8413703000



UPS 25-40 130 50



UPS 25-40 130 50



! [], .